

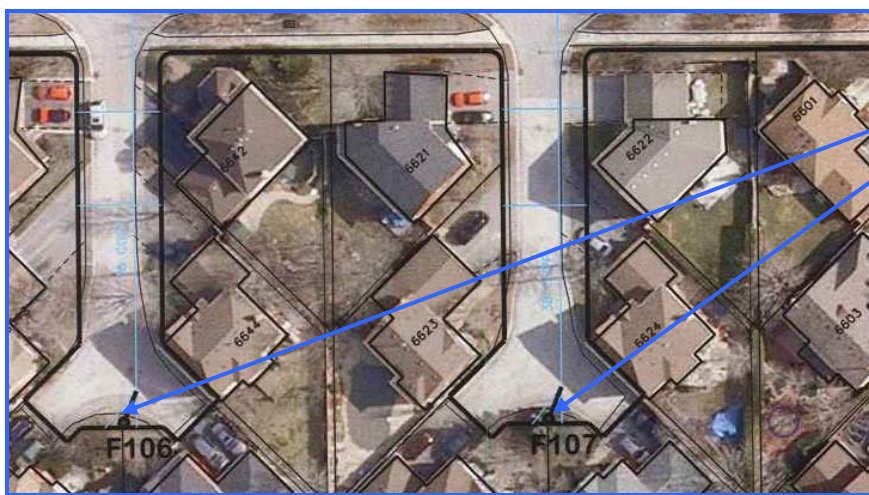
Date: June 2013
Project: 13-1345 P

**Installation of Water Flushing Stations
Tenth Line West, Mockingbird Lane, Snow Goose Lane,
Bishop Strachan Court, Trelawny Circle**

City of Mississauga, Ward 10

What are we doing?

- This summer, we will install water flushing stations at the end of each cul-de-sac along:
 - Tenth Line W from Aquitaine Ave. to Britannia Rd. W.
 - Mockingbird Lane
 - Snow Goose Lane
 - Bishop Strachan Court
 - Trelawny Circle
- The flushing stations will be located about five feet from the curb, on the lot line between the two end houses.



Flushing stations

Why?

- The Region of Peel's watermain flushing program is one way we ensure safe drinking water.
- We flush watermains to make sure there is enough chlorine in the water, as regulated in the *Safe Drinking Water Act, 2002*.
- Because water loses chlorine over time, we must flush the watermains in places where there may be low water demand—like on a cul-de-sac.
- This work must be done before the City of Mississauga paves your street in 2014.

What does a flushing station look like?

- The flushing station is a blue PVC tube, approximately four feet above ground and six inches in diameter.
- The sod will be restored around the flushing station. (In the picture below, this hasn't been done yet.)
- As long as we can easily reach the station, you can plant flowers or small shrubs near the base.



How long is the installation process?

- Installing a flushing station on each of the cul-de-sacs in the neighbourhood will take about two months.
- We will be on your cul-de-sac for less than a week.
- While we are on your cul-de-sac, we ask that you do not park on the street during our work hours of 7 a.m. to 7 p.m.
- Follow our progress on Twitter @peelpublicworks to see when we'll be on your cul-de-sac.

How can you learn more?

- Please come to the **Public Information Centre**:
 - **Wednesday, June 12, 2013 6 – 8 p.m.**
Trelawny Public School
3420 Trelawny Circle, Mississauga
- You will be able to speak to members of the Capital Works, Operations, and Water Quality teams about the flushing stations, how they work, and why they are important.
- Before and during construction, please contact me for more information at 905-791-7800 ext. 5026, cheryl.hudson@peelregion.ca

Cheryl Hudson
Technical Analyst
Water Division
Capital Works – Transmission and Distribution